

---

## Contents

Atmel FPGA Integrated Development System (IDS) contains the following items:

- IDS Installation Guide
- CD-ROM containing all necessary software and online documents

## Features

- Support for Industry-standard PC and Workstation Tools
- Schematic, PLD, Verilog® and VHDL Design Entry Supported
- Macro Libraries for AT40K/AT40KAL and AT6000 FPGA Families
- Automatic Macro Generators for AT40K and AT6000
- HDL Planner for VHDL and Verilog Entry
- Hierarchy Browser
- User Library Management
- Technology Mapping
- Multi-chip Partitioning
- Floor Planning Capability
- Graphical Constraint Entry
- Incremental Design Change
- Timing Driven Design with Advanced Static Timing Analysis
- Automatic Place and Route
- Interactive Layout Editing
- Power Calculation
- Full Back-annotation for Functional and Post-layout Simulation
- Online Tutorials for New and Advanced Users
- Applications Support
- FPGA Applications Hotline - (408) 436-4119 or [fpga@atmel.com](mailto:fpga@atmel.com)
- FAQ and Application Notes at <http://www.atmel.com/atmel/products/prod3.htm>
- Maintenance
- Software Support for One Month is Included

## Description

Atmel's Integrated Development System (IDS) lets designers create fast, predictable designs with AT40K/AT40KAL and AT6000 Series FPGAs.

Available for use with Windows® 98/2000, Windows NT® and Sun Solaris™/SunOS UNIX Workstation-based computers, IDS combines industry-standard software for design entry, synthesis and simulation with Atmel's proprietary software for component generation, automatic and interactive placement and routing, timing analysis and bitstream generation.

The IDS Desktop is shown in Figure 1. The Design Flow Bar provides push-button access to all the steps in the design flow. This includes opening schematic entry and synthesis tools and generating files for simulations automatically.

Figure 2 shows the HDL Planner tool which is used for VHDL and Verilog Design Entry. Figure 3 shows the Macro Generator used to generate standard components with optimal layout and performance.



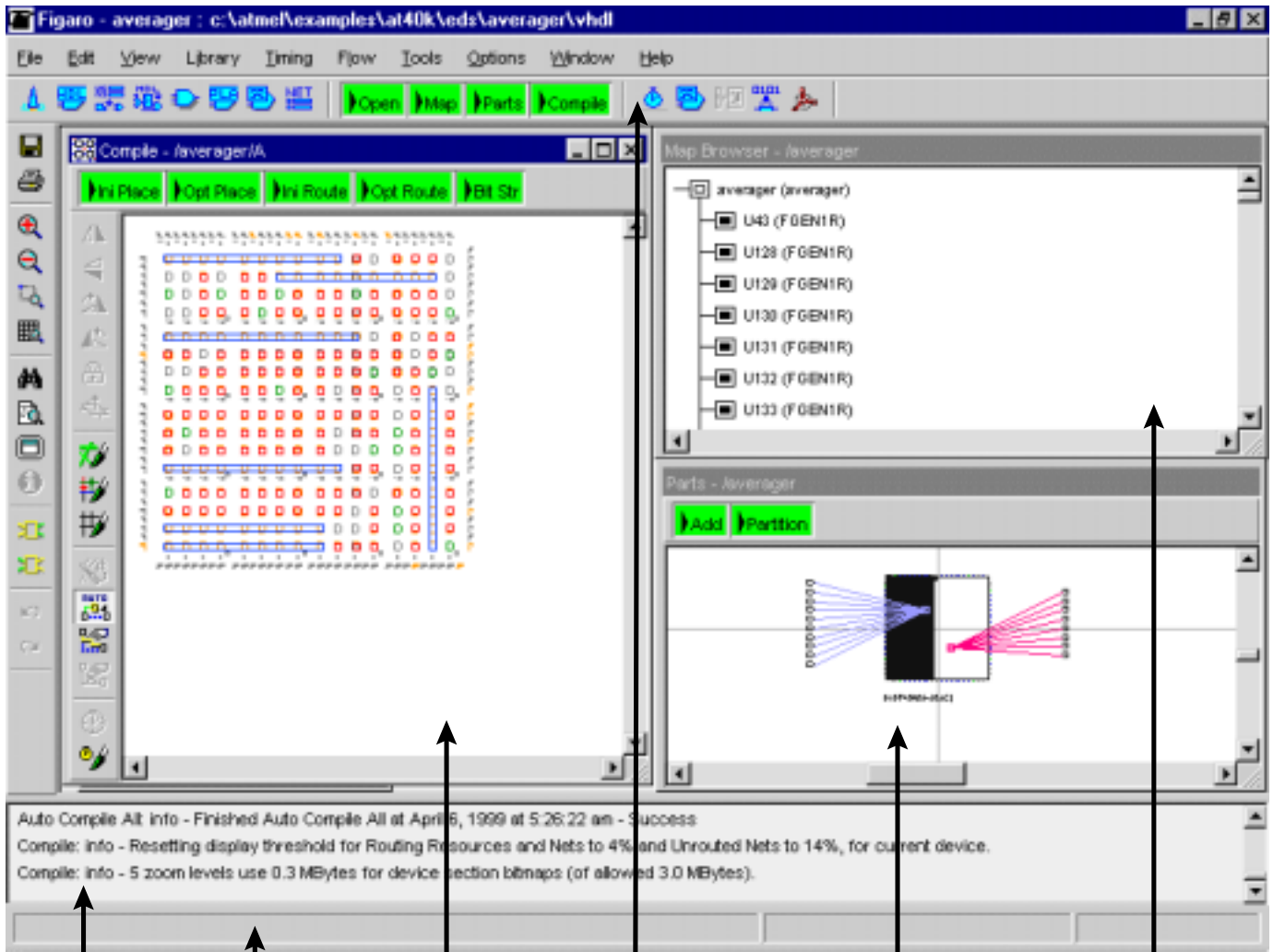
---

## Atmel FPGA Integrated Development System (IDS)

---



Figure 1. Integrated Development System



Transcript Window

Status Bar

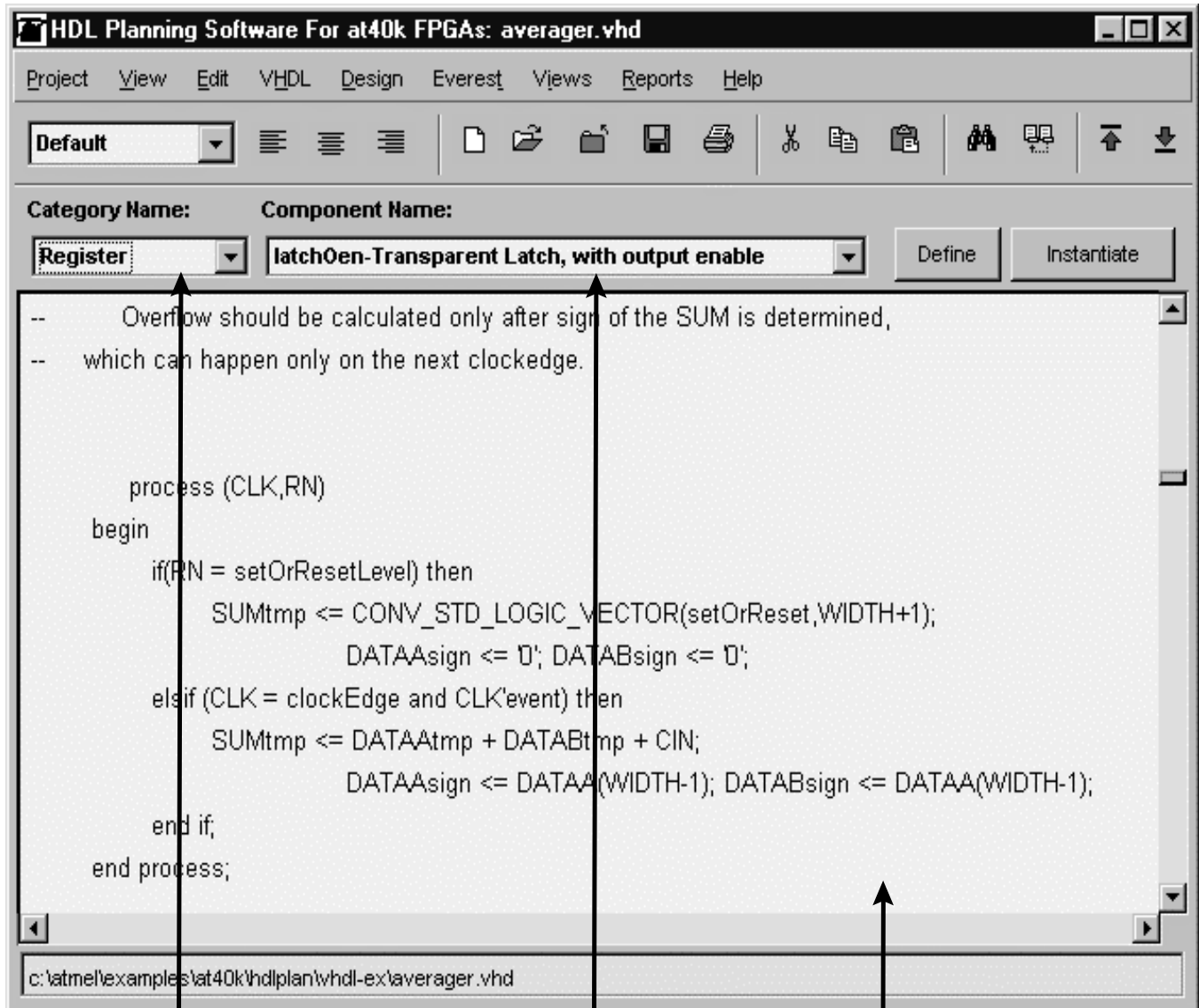
Interactive Layout Editor

Design Flow Bar

Parts/Pinouts Editor

Hierarchy Browser

Figure 2. HDL Planner Tool

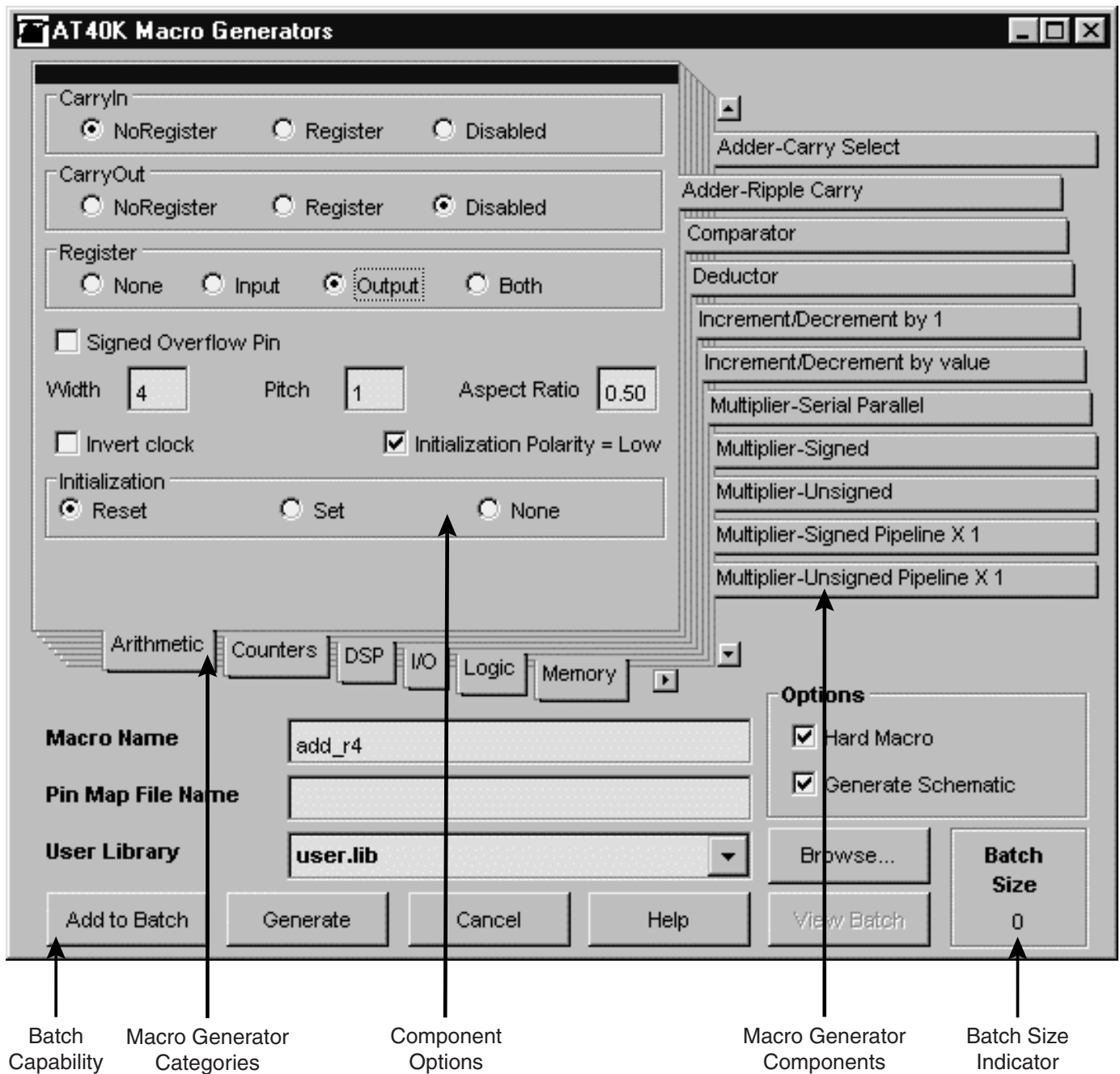


Macro Generator  
Categories

Macro  
Components

VHDL/Verilog  
Editor

Figure 3. Macro Generator



## Ordering IDS and CAE Tools

When IDS is shipped, the CD contains library support and interfaces to all the listed CAE tools, see on page 6.

A month evaluation copy of Exemplar LeonardoSpectrum® Synthesis tool is shipped on the CD.

For other CAE tools listed, the libraries and interface are supplied on the IDS CD. For the vendor software and licensing you should go directly to the third-party vendor. Atmel does not supply these systems. Many of the listed tools have evaluation copies available on their web sites.

## Simulation Libraries

A month evaluation copy of ModelSim® Simulator is shipped on the CD.

There are many other simulators available on the worldwide web. The IDS CD does include fully verified Verilog and VHDL VITAL® libraries. These can be compiled and used with any other simulation tool that is Verilog or VHDL compliant. IDS will export a Functional Netlist for pre-layout simulation and a Post-layout Netlist and SDF files for Post-layout Simulation.

The only difference with “Unsupported” tools is that there are not tutorials for these tools, and they are not fully integrated to IDS.

## Annual Maintenance Agreements

Annual maintenance agreements are available for each Package Option in the Integrated Development System (IDS). The first year of maintenance is included in the purchase price – renewal is optional. Maintenance agreements give the users direct access to Atmel’s experienced technical support staff and cover software upgrades that keep engineers on the leading edge of Atmel’s design tools.

## System Requirements

### PC-based Systems

For a single-user system, IDS requires a personal computer with a 80486 or greater micro-processor equipped as follows; or better.

- 3.5-inch 1.44 MB capacity high-density disk drive (recommended)
- CD-ROM drive
- 200 MB minimum hard drive (both IDS and Viewlogic)
- 48 MB extended memory minimum (64 MB recommended for larger designs using Timing and Mapping)
- Serial interface port
- Parallel interface port
- MS-DOS, release 5.0
- Microsoft Windows 95/98/2000, NT 3.51, or NT 4.0 or higher
- VGA graphics card and display monitor
- Windows compatible mouse
- A permanent swap space of 64 MB: refer to the Windows documentation for details on its setup
- Sufficient disk space for file archival and management

### Sun-based Systems

For a single-user system, IDS requires a Sun Sparcstation® workstation equipped as follows:

- CD-ROM drive (local or network)
- 200 MB (minimum) hard drive 50 MB hard disk space allocated as swap space
- 64 MB RAM
- SUNOS 4.1.2/Solaris 2.4 or higher
- X11R4/Motif 1.1.4, X11R5/Motif 1.2, or OpenWindows 3.x



## CAE Tools Supported by IDS

Vendor	Tool	Version	Type	Platform	AT40K AT40KAL	AT6000	Software Ordering Code	Maintenance Ordering Code
eProduct Designer®	ViewDraw™	1.1+	Schematic	PC	x	x	See Viewlogic Table for Ordering	See Viewlogic Table for Ordering
	Digital Fusion™	1.1+	Simulation	PC	x	x		
Viewlogic® Powerview™	ViewDraw™	5.3.1 - 6.0+	Schematic	Sun	x	x		
	ViewSim™	5.3.1 - 6.0+	Simulation	Sun	x	x		
	ViewSynthesis™	5.3.1 - 6.0+	Synthesis	Sun	x	x		
Orcad®	Express®/Capture®	9.1+	Schematic	PC	x	x	ATDS2100PC	ATDM2100PC
	Express®/Capture®	9.1+	Simulation	PC	x	x		
	Express®/Capture®	9.1+	Synthesis	PC	x	x		
Synplicity®	Synplify™	5.1.2+	Synthesis	PC/Sun	x		ATDS2100PC	ATDM2100PC
Model Technology™	ModelSim™	4.7b+	Simulation	PC	x	x	ATDS2100PC	ATDM2100PC
	ModelSim™	5.1+	Simulation	Sun	x	x	ATDS2100SN	ATDM2100SN
Exemplar™	LeonardoSpectrum™	3+	Synthesis	PC	x	x	ATDS2100PC	ATDM2100PC
	Galileo Extreme™	4.1+	Synthesis	PC/Sun	x	x	ATDS2100SN	ATDM2100SN
	Leonardo Extreme™	4.1+	Synthesis	PC/Sun	x	x		
Synopsys®	FPGA Express™	2.1+	Synthesis	PC	x	x	ATDS2100PC	ATDM2100PC
	FPGA Compiler™	3.2+	Synthesis	Sun	x	x	ATDS2100SN	ATDM2100SN
	Design Compiler™	3.2+	Synthesis	Sun	x	x		
	VSS VHDL Simulator™	3.2+	Simulation	Sun	x	x		

## AT6000 Only

Vendor	Tool	Version	Type	Platform	AT6000	Software Ordering Code	Maintenance Ordering Code
Mentor Idea Station	Design Architect™	8.2 - 8.4	Schematic	Sun	x	ATDS2100SN	ATDM2100SN
	Quicksim™	8.2 - 8.4	Simulation	Sun	x		
	ENWrite™	8.2 - 8.4		Sun	x		
	ENRead™	8.2 - 8.4		Sun	x		
	SG	8.2 - 8.4	Schematic Gen	Sun	x		
Cadence 9504 or Higher	Concept™	1.6 - p4+	Schematic	Sun	x	ATDS2100SN	ATDM2100SN
	Verilog-XL™	2.3.14+	Simulation	Sun	x		
	SDF Annotator	2.0.5		Sun	x		
	SDF Interface	5.0.5		Sun	x		

## Design Hardware

<b>ATDH40M</b>	<b>AT40K Series FPGA Prototyping Kit (One Daughterboard included - Specify)</b>
ATDH40D84	Daughter Board Attachment - 84PLCC
ATDH40D100R	Daughter Board Attachment - 100RQFP
ATDH40D100	Daughter Board Attachment - 100VQFP
ATDH40D144	Daughter Board Attachment - 144TQFP
ATDH40D160	Daughter Board Attachment - 160PQFP
ATDH40D208	Daughter Board Attachment - 208PQFP
ATDH40D240	Daughter Board Attachment - 240PQFP
ATDH2000	AT6000 Series FPGA Demonstration Board
ATDH2080	AT6000 Series FPGA Prototyping Kit
ATDH2200E	AT17 Series Configurator Programming Kit (Enhanced)
ATDH2221	20-pin SOIC Adapter for ATDH2200
ATDH2222	20-pin PLCC Adapter for ATDH2200
ATDH2223	8-lead SOIC Adapter for ATDH2200
ATDH2224	44-lead TQFP Adapter for ATDH2200
ATDH2226	32-lead TQFP Adapter for ATDH2200
ATDH2227	44-lead PLCC Adapter for ATDH2200
ATDH2225	Standalone In-System Programming Cable



## Atmel Headquarters

### *Corporate Headquarters*

2325 Orchard Parkway  
San Jose, CA 95131  
TEL (408) 441-0311  
FAX (408) 487-2600

### *Europe*

Atmel SarL  
Route des Arsenaux 41  
Casa Postale 80  
CH-1705 Fribourg  
Switzerland  
TEL (41) 26-426-5555  
FAX (41) 26-426-5500

### *Asia*

Atmel Asia, Ltd.  
Room 1219  
Chinachem Golden Plaza  
77 Mody Road Tsimhatsui  
East Kowloon  
Hong Kong  
TEL (852) 2721-9778  
FAX (852) 2722-1369

### *Japan*

Atmel Japan K.K.  
9F, Tonetsu Shinkawa Bldg.  
1-24-8 Shinkawa  
Chuo-ku, Tokyo 104-0033  
Japan  
TEL (81) 3-3523-3551  
FAX (81) 3-3523-7581

## Atmel Operations

### *Atmel Colorado Springs*

1150 E. Cheyenne Mtn. Blvd.  
Colorado Springs, CO 80906  
TEL (719) 576-3300  
FAX (719) 540-1759

### *Atmel Rousset*

Zone Industrielle  
13106 Rousset Cedex  
France  
TEL (33) 4-4253-6000  
FAX (33) 4-4253-6001

### *Atmel Smart Card ICs*

Scottish Enterprise Technology Park  
East Kilbride, Scotland G75 0QR  
TEL (44) 1355-357-000  
FAX (44) 1355-242-743

### *Atmel Grenoble*

Avenue de Rochepleine  
BP 123  
38521 Saint-Egreve Cedex  
France  
TEL (33) 4-7658-3000  
FAX (33) 4-7658-3480

---

### *Atmel FPGA Hotline*

1-(408) 436-4119

### *Atmel FPGA e-mail*

fpga@atmel.com

### *FAQ*

Accessible on web site

---

### *Fax-on-Demand*

North America:

1-(800) 292-8635

International:

1-(408) 441-0732

### *e-mail*

literature@atmel.com

### *Web Site*

http://www.atmel.com

### *BBS*

1-(408) 436-4309

## © Atmel Corporation 2001.

Atmel Corporation makes no warranty for the use of its products, other than those expressly contained in the Company's standard warranty which is detailed in Atmel's Terms and Conditions located on the Company's web site. The Company assumes no responsibility for any errors which may appear in this document, reserves the right to change devices or specifications detailed herein at any time without notice, and does not make any commitment to update the information contained herein. No licenses to patents or other intellectual property of Atmel are granted by the Company in connection with the sale of Atmel products, expressly or by implication. Atmel's products are not authorized for use as critical components in life support devices or systems..

Design Architech, QuickSim, ENWrite, ENRead, LeonardoSpectrum and Exemplar are the trademarks of Mentor Graphics Corporation. Idea Station, Galileo and Leonardo are the registered trademarks of Mentor Graphics Corporation. Sparcstation is the registered trademark of Sun Microsystems, Inc. Solaris is the trademark of Sun Microsystems, Inc. ViewDraw is the registered trademark of Viewlogic Systems, Inc. eProduct Designer, Digital Fusion, ViewSim and ViewSynthesis are the trademarks of Viewlogic Systems, Inc. Orcad, Orcad Express and Orcad Capture are the registered trademarks of Cadence Design Systems, Inc. FPGA Express, FPGA Compiler, Design Compiler and VSS VHDL Simulator are the trademarks of Synopsys, Inc. Windows and Windows NT are trademarks of Microsoft Corporation. Sinplify is the registered trademark of Synplicity, Inc. ModelSim is the trademark of Model Technology Corporation. Verilog is the trademark of Gateway Design Automation Corporation. Vital is the registered trademark of PureTech Waters of America, Inc. All other marks bearing ® and/or ™ are registered trademarks and trademarks of Atmel Corporation. Other terms and product names may be trademarks of others.



Printed on recycled paper.

1421D-06/01/xM